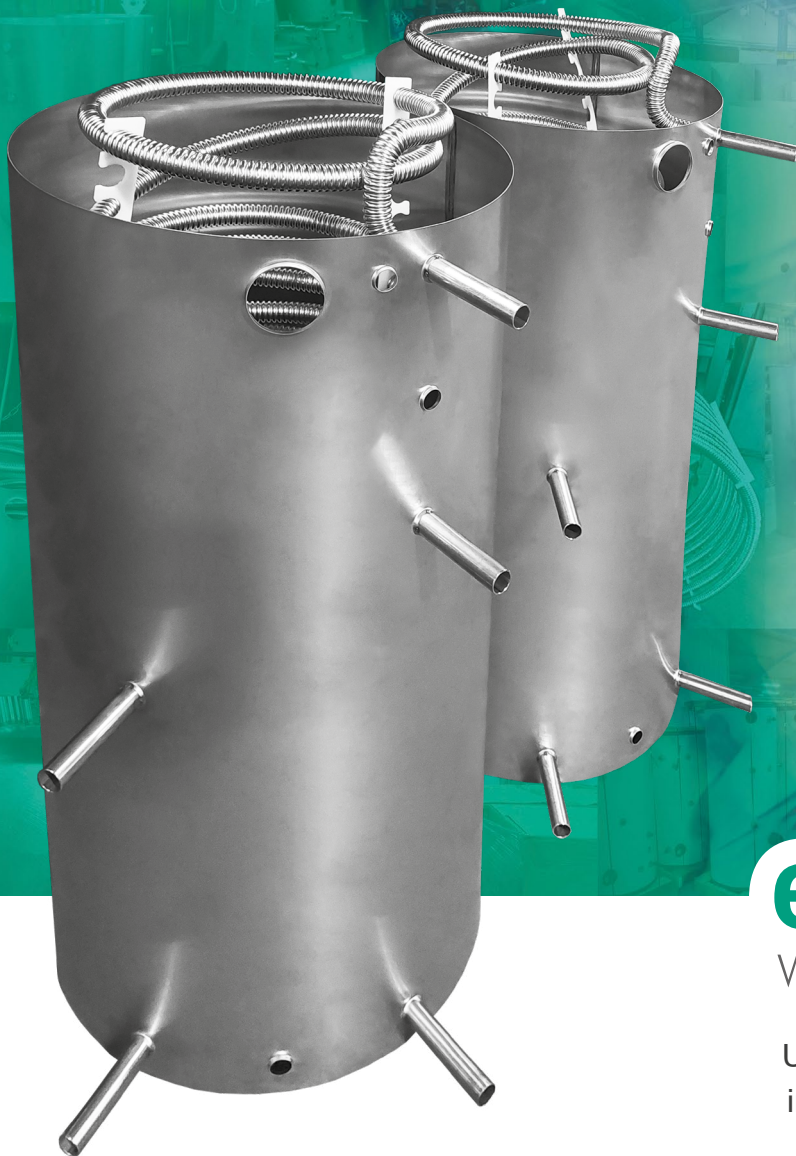


# Bespoke Design

Efficient & sustainable water heating solutions



**EXCELSIOR**  
WATER HEATING

UK manufacturing industry pioneers  
in liquid cooling & heating solutions  
founded in 1960



# Excelsior WI & WB

## Commercial & Buffer Vessels

The high performance and design values of the Excelsior vessel can now be obtained in a commercial/bespoke format with 90mm insulation (ODP=0, GWP=1).

These vessels can be built to the requirements of the specifier; with connection bosses, coils, inlets, outlets, pockets and ancillary equipment all located and sized as required.

### Connection Bosses

>> Size & location

### Coils / Plate Heat Exchange

>> Length; Materials  
Surface area; Positioning  
Pre-Plumb Assembly

### Inlets / Outlets

>> Size & location

### Removable Systems

>> High Pressure Sytems up to 10 Bar

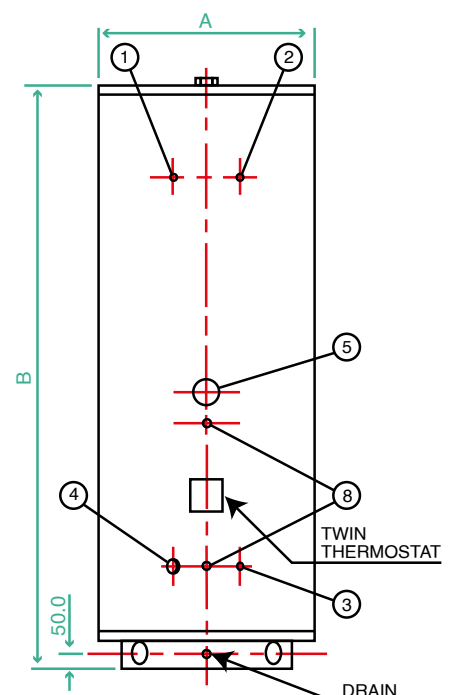
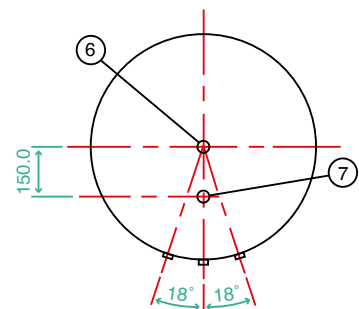
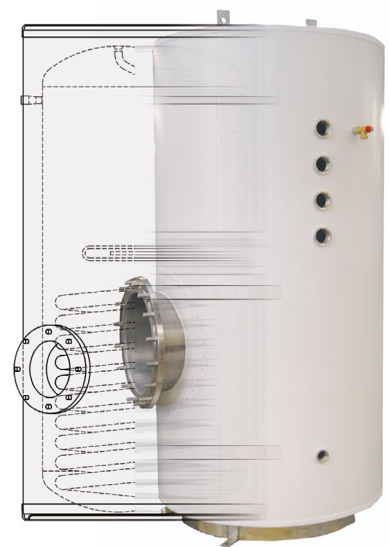
### Pockets (eg: temperature sensor)

>> Size & location

### Ancillary Equipment

>> Expansion kits, gauges, pumps etc...

Water heating vessels are available up to 5,000 litres & buffer/storage vessels up to 32,000 litres.



Sizes and Ratings

Size	A	B	4	6	8	Coil Rating
450L	750	1565	1"	1"	Ø28	27kW
500L	750	1720	1"	1"	Ø28	27kW
575L	750	1930	1"	1"	Ø28	27kW
680L	750	2250	1"	1"	Ø28	54kW
810L	1080	1604	1½"	1½"	Ø28	54kW
840L	750	2745	1½"	1½"	Ø28	54kW
965L	1080	1850	1½"	1½"	Ø28	54kW
1125L	1080	2100	1½"	1½"	Ø28	54kW
1380L	1180	2120	1½"	1½"	Ø28	54kW
1775L	1380	2620	1½"	1½"	Ø28	54kW
1875L	1380	2050	2"	2"	Ø28	54kW
2155L	1380	2332	2"	2"	Ø28	54kW
2500L	1380	2600	2"	2"	Ø28	54kW
3000L	1380	3040	2"	2"	Ø28	54kW

### Description

1. Auxiliary (½" BSP) connection
2. Auxiliary (½" BSP) connection (destratification / secondary return)
3. Auxiliary (½" BSP) connection (destratification)
4. Inlet (1", 1½", 2" BSP) connection
5. Immersion Heater (2¼" BSP) connection (not fitted unless requested)
6. Outlet (1", 1½", 2" BSP) connection
7. Temperature & Pressure Relief Valve (¾" BSP) connection
8. Coil Connections (Upper and Lower)



# Multiple Applications



## Marine

- >> High-Grade Materials
- >> Strict Packaging Requirements

## Process & Catering

- >> Hygiene
- >> Set Tolerances
- >> Specific Design

## Leisure & Tourism

- >> Rapid Recovery
- >> Flexible & Bespoke Design
- >> Sports Facilities – Intermittent Demand

## Building Services

- >> Mixed Use Various DHW Demands
- >> Pre-Heat Storage for Energy Saving

## NHS

- >> Hygiene
- >> L8 Compliant





# Also from Fabdec:



A comprehensive range of water heating spares including:

- >> Immersion heaters
- >> Valves - incl. T & P, pressure reducing, safety relief, non-return valves
- >> Expansion vessels
- >> Other accessories

[www.fabdec.com/water-heating](http://www.fabdec.com/water-heating)

## Fabdec Ltd

Grange Road, Ellesmere,  
Shropshire, SY12 9DG

**Tel:** +44 (0) 1691 627200

**Fax:** +44 (0) 1691 627222

**Email:** [sales@fabdec.com](mailto:sales@fabdec.com)



## Accreditation:

